



Ernesettle Community School

Biggin Hill, Ernesettle, Plymouth, PL5 2RB
Tel: 01752 201177
Email: ecs@ecs.plymouth.sch.uk
www.ecs.timat.co.uk
Head of School: Mrs. E Lenzner
Executive Headteacher: Mr. A Meredith



Friday 20th October 2023

Dear Parents/Carers,

Term 2

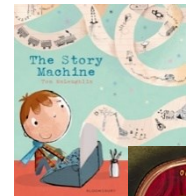
Wow! We have all enjoyed a successful start back to school, kick started our learning and had lots of fun along the way. Throughout Term 1, we have learned about oceans and continents in Geography, explored everyday materials in science and designed and built a moving vehicle in Design and Technology. Next term, Year Two will begin their 'Significant Explorers' area of study, which has particular links to History. The children will explore why some people are significant and make simple comparisons between explorations. They will discuss the life of Sir Francis Drake, his voyages and accomplishments and begin to think about what it would like to live during the Tudor times.

In **History**, we'll be learning to:

- Understand the impact Sir Francis Drake had during Tudor times.
- What it was like to live during Tudor and Victorian times.
- Describe some simple similarities and differences between artefacts.
- Ask and answer relevant basic questions about the past.
- Sort artefacts from 'then' and 'now'.



In **English**, the children's first unit of writing in Term 2 will be based on an 'Explanation Text' called 'The Story Machine', where they will build on writing sentences using capital letters, full stops, and impressive adjectives. Later in the term, the children will explore the poetic devices used in 'The Night Before Christmas'. In their **Whole Class Reading** sessions, the children will be reading 'The Incredible Book Eating Boy', 'After the Fall' and 'The Polar Express'.



In **Maths**, the children will be continuing to build and develop their knowledge in addition and subtraction, before moving onto looking at money and multiplication and division towards the end of Term 2.

Finally, in **Science**, the children will be learning about everyday materials and exploring how the shape of solid objects made from some materials can be changed by squashing, bending, twisting and stretching.

National Support School designated by



National College for Teaching & Leadership

National Leader of Education designated by



National College for Teaching & Leadership





Ernesettle Community School

Biggin Hill, Ernesettle, Plymouth, PL5 2RB
Tel: 01752 201177
Email: ecs@ecs.plymouth.sch.uk
www.ecs.timat.co.uk
Head of School: Mrs. E Lenzner
Executive Headteacher: Mr. A Meredith



Learning at Home

In Year Two, the homework expectations include **reading at least five times a week** and you can support your child by recording these reads on BoomReader. Your child will also need to ensure they are **practicing a weekly set of spellings** using strategies learned in school. In addition, children will need to complete **one Curriculum task from their Home Learning Menu**. This task will allow the children to prepare for upcoming lessons and on occasions, they may find this task challenging but please be assured this will be explored further in school. **Home Learning Books must be in school every day** please and will be marked each Thursday.



Class Dojo will be available for Home Learning support and your child's Learning at Home Booklet and Home Learning Menu will be uploaded to the Class Story. Staff will only be able to answer questions related to Home Learning via Class Dojo. Children are welcome to upload pictures of their learning.

PE for Term 2 will be on a **Wednesday for 2AW, 2MG and 2HH**, therefore, please make sure your child has their PE kit with them on this day. Due to lots of the sessions taking place outdoors, please ensure your child has appropriate PE kit and a water bottle should the weather be cold/wet or sunny/warm please.

We wish you all a restful half term and look forward to seeing the children back on site on Monday 6th November.

Best wishes,
Mr. A Williams, Miss. H Hole, Miss. V Hill, Miss. M Gibson and the Year Two Team

National Support School
designated by



National College for
Teaching & Leadership

National Leader of Education
designated by



National College for
Teaching & Leadership

