



# Year 1: Term 1 Snapshot

## English

- Dear Zoo
- The Tiger who Came to Tea
- The Three Little Pigs

## Maths

- Numbers to 10
- Part-Whole within 10

## Geography

- Identify local landmarks
- Describe physical and human features of our area
- Plot simple routes on a map



## Key Dates

- **Tuesday 3rd September:**  
First Day of School
- **Monday 9th September:**  
School Photos
- **W/B 27th September:**  
Local Area Walk

## Home Learning

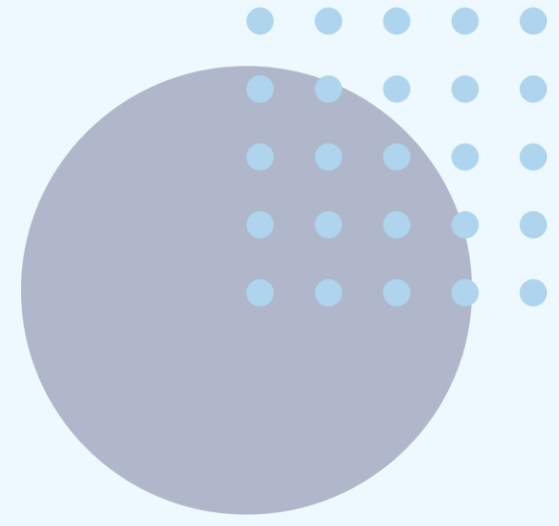
- Reading as much as possible.
- Practising weekly spellings.
- Completing a creative task from the Home Learning Menu.

## PE

- PE Lessons will be on a **Monday** for Year 1.
- Please make sure your child is wearing School PE Kit.



# Year 1: Term 1 Jigsaw



What am I going to be learning during the Being Me in My World topic of PSHE in Year 1?

Special and Safe  
I will understand that I am special.  
I will learn that I am safe when I am in my classroom.



My Class  
I will understand the rights and responsibilities as a member of my class.  
I will know that I belong in my class.



Rewards and Feeling Proud  
I know that my views are valued and can contribute to the Learning Charter.  
I recognise how it feels to be proud of an achievement.



Rights and Responsibilities  
I understand the rights and responsibilities for being a member of my class.  
I will know how to make my class a safe space for everybody to learn.



Owning Our Learning Charter  
I understand my rights and responsibilities within our Learning Charter.  
I understand my choices in following our Learning Charter.



Consequences  
I can recognise the choices I make and understand the consequences.  
I recognise the range of feelings when I face certain consequences.

